


Hivoduct

Compatible transmission

«Aircables» for electric energy transmission



Pressurized air insulation

XLPE and SF₆ free

High rated currents

Less losses

Lowes outside EM fields

Not flammable

Compact

Trenchless laying

Passive Safety

Easy Transport

12 kV – 420 kV

HIVODUCT AG
www.hivoduct.com

+41 79 458 62 45
info@hivoduct.com

We reserve the right to change specifications without notice.



Hivoduct

Compatible transmission

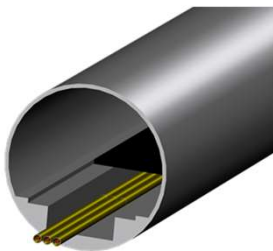
Hivoduct Aircables

Product portfolio and technical data

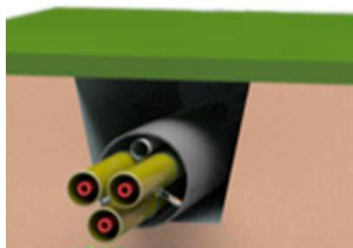
	G00 Series	G10 Series	G20 Series	G30 Series
Rated Voltage	12 - 52 kV	72 kV - 145 kV	170 kV - 300 kV	300 kV - 420 kV
Rated Current	500 - 4000 A	500 - 3150 A	500 A - 4000 A	1000 A - 5000 A
Transmission Capacity 3ph	<=450 MW	<=800 MW	<=2'000 MW	<=3'600 MW
Insulation Medium	Pressurized Air	Pressurized Air	Pressurized Air	Pressurized Air
Flange sealing	Double sealing	Double sealing	Double sealing	Double sealing
Enclosure design	Single phase	Single phase	Single phase	Single phase
Weight / 3ph (approx.)	70 kg/m	90 kg/m	130 kg/m	170 kg/m
Losses @ 1 kA avg. current (For 3ph per m Length)	32 W/m	32 W/m	25 W/m	18 W/m
Pipe diameter required for 3 ph including rollers	450 mm	630 mm	900 mm	1200mm
Trench Width x Depth (side-by-side, approx.)	1 m x 0.5 m	1 m x 0.5 m	1.3 m x 0.6 m	1.8 m x 1 m
Transport length, weight	< 6m, <500 kg	< 6m, <500 kg	< 6m, <700 kg	< 6m, <1100 kg
Earthing method	Solid grounding	Solid grounding	Solid grounding	Solid grounding

Installation options

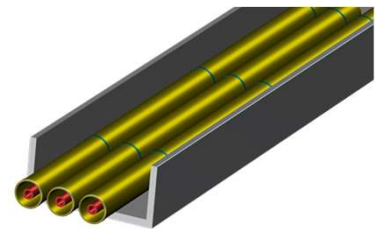
Tunnel



Pipe



Trench



HIVODUCT AG
www.hivoduct.com

+41 79 458 62 45
info@hivoduct.com

We reserve the right to change specifications without notice.